

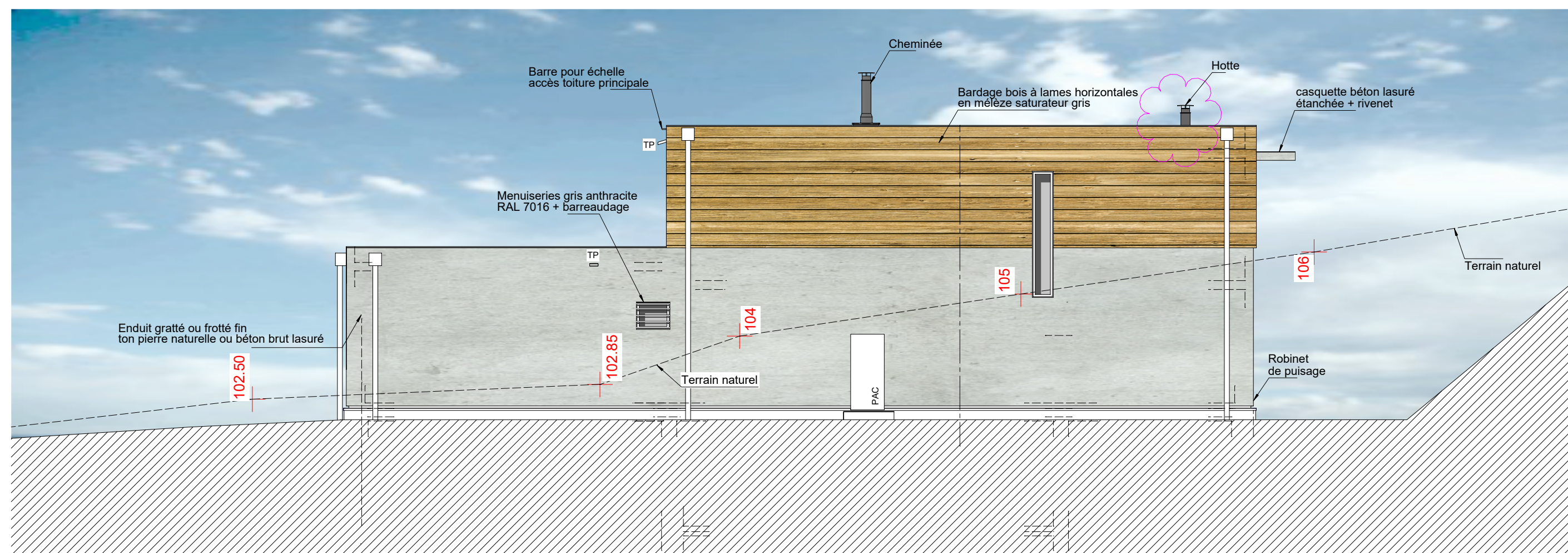
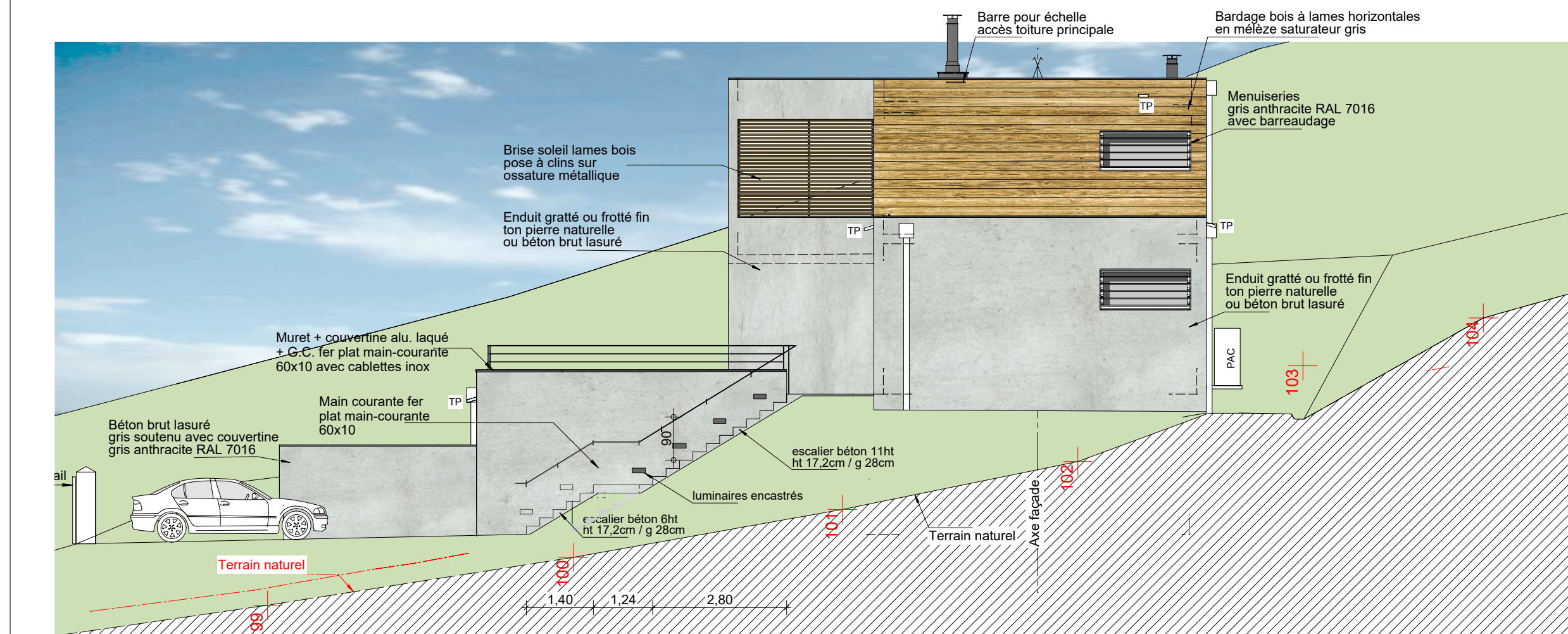
This architectural elevation drawing shows a modern building facade with a mix of materials and structural elements. The building is situated on a sloping terrain, with a property line indicated on the left. The facade features a combination of wood, concrete, and metal. Key elements include:

- Roof and Upper Level:** The roof is covered with a "casquette béton lasuré étanchée + rivenet". The upper level has a "Bardage bois à lames horizontales en mélèze saturateur gris". A "Brise soleil lames bois pose à clins sur ossature métallique" is visible on the right side of the upper level.
- Ground Level:** The ground level features a "Naissance EP + chaîne + regard" and a "Poteau béton". The facade is composed of "Béton brut lasuré gris soutenu avec couverteine gris anthracite RAL 7016". A "Porte de garage gris anthracite RAL 7016" is located at the bottom center.
- Right Side:** The right side of the building has a "Porte pleine métallique laquée gris anthracite RAL 7016" and "Menuiseries gris anthracite RAL 7016". The ground level on the right is labeled "Terrain naturel" and "ruisseau".
- Structural Details:** The drawing includes various structural details such as "Enduit gratté ou frotté fin ton pierre naturelle ou béton brut lasuré", "Brique pour échelle accès toiture principale", and "Brique pour échelle accès toiture principale".
- Levels and Dimensions:** The drawing includes several levels and dimensions: +9.53, +6.65, +2.93, +0.00, and 10.5. Dimensions of 87, 105, 106.50, and 10 are also indicated.

The drawing is a detailed technical representation of the building's exterior, showing the relationship between the building and its environment.

Architectural elevation drawing of a house facade, showing a cross-section of the building and its relationship to the surrounding terrain. The drawing includes the following elements and annotations:

- Limites de propriété:** Indicated by a vertical line on the right side of the drawing.
- Limites d'altitude:** Marked with red crosses and numbers: 110.60, 110, 109, 108, 107, 106, 105, 104, 103, 102.
- Terrain naturel inchangé:** Indicated by a dashed line representing the natural ground level.
- Building Details:**
 - Bardage bois à lames horizontales en mélèze saturateur gris:** Horizontal wood cladding in grey-saturated larch.
 - Menuiseries gris anthracite RAL 7016:** Grey anthracite window frames.
 - Mur ossature bois avec bardage bois en mélèze saturateur gris:** Wood frame wall with grey-saturated larch cladding.
 - béton brut lasuré:** Raw concrete finish.
 - casquette béton lasuré étanchée + rivet:** Waterproofed concrete cap with rivets.
 - Brise soleil lames bois pose à clins sur ossature métallique:** Wood slat sunshade mounted on a metal frame.
 - Garde corps inox ou métal coloris alu métallisé RAL 9006 (ou galvanisé) ou parois vitrées:** Stainless steel or metal handrail in RAL 9006 (or galvanized) or glass panels.
 - béton brut lasuré:** Raw concrete finish.
 - poteau béton 20x20:** 20x20 concrete post.
 - EP balcon:** External platform/balcony.
 - Robinet de puisage:** Water tap.
 - PAC:** Heat pump unit.
 - Naissance EP + chaine + regard:** External platform with chain and manhole.
 - Piscine:** Swimming pool.
- Dimensions:** A horizontal dimension of 2.00 is shown at the base of the building.
- Leveling:** The drawing is titled "Niv. npl" and includes a note "Niv. npl = 36.00".



Façade Ouest